

NeuView ®
Crystal Clear Browser
by
Bocakeys, Inc.

www.thebocakeys.com

© 2011 Bocakeys, Inc. All rights reserved.
Patents pending.

Manual for Current Version: 2.0.0.7

Dated: May 30, 2011

Overview

This unique browser was developed by the owner of the company to meet a personal need to have a very clean pure browser application that only provided features that are absolutely necessary to navigate the internet and insure internet settings and connection are correct. The program also providing viewing of source code of current page which by dragging mouse and copy/paste action of keyboard strokes can be placed in a more powerful editor such as ConText (free version provided in installation). With this browser there are few “frills” but then again you do not have to constantly look at items on your browser that are not used often or never used. It is a “soothing to the eye” appearance which although we could not prove it, could save you stress aging and your eye sight as you get older. The program has a unique command line feature that allows locking of a site and hiding or disabling completely the navigation and other controls so that you can restrict employees or children or use disabling for example in order to completely remove all controls for a pure window style picture.

Installation

To install after downloading from your purchasing email:

Find downloaded file.

Rename file to remove .rename extension.

File should keep NeuView name and .zip extension only.

Then Right-Click on file with right-mouse button and Extract... files to a subfolder.

Run file: vjsetup.cmd

You will be prompted as to whether to install Prerequisite programs.
The ones included are listed in the popup window during installation.

If you are unsure as to whether you need these items,
You can either select Yes and go through them one by one.
Most likely you will at least require the Adobe Flash Patch
And .NET Framework 4.0 which if you selected No could still be found
In the installation folder and installed manually when finding that program
has issues operating. You will notice the use of another Bocakeys, Inc. program
called VirtualJudge at installation time. The most effort required from you will be
to press Start if you need the download, wait for Stop button to turn to End button
and Overall Progress to be 100%, and then Press End. Just press only End to
skip the download operation completely and more on to another prerequisite.

The only other questions are whether you wish Desktop icons and if so whether
You wish as a Loaded Desktop (More icons visible) or all under one single
folder on the Desktop.

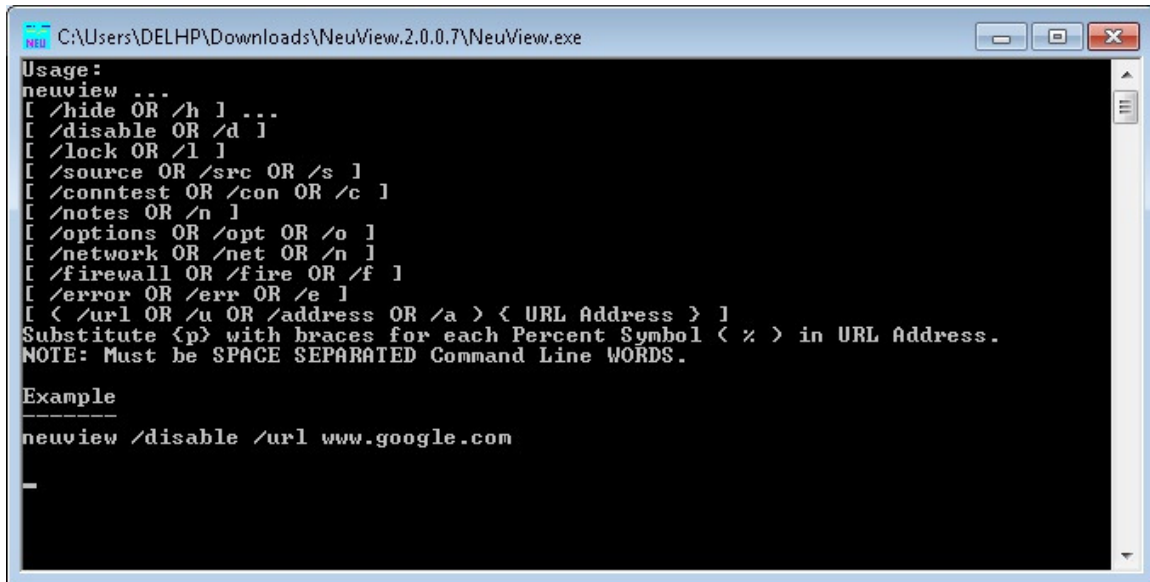
At the end, shortcuts will be generated, this manual will display should you have
Adobe Reader (Available at get.adobe.com/reader) and Special Instructions will
explain how to adjust your Environment Variables for maximum efficiency.

After installation, close all installation related windows should any be left open.
Observe that you now have a NeuView folder in your Start Menu → All Programs
list and NeuView icon and folder on Desktop (Desktop configuration may vary
depending on whether a “Loaded” one or not.)

Command Line Usage

The command line options correspond directly to what is available on the user
interface window.

By starting NeuView without any parameters or initial URL address, the following
Black Command Window will show all supported optional parameters:



```
Usage:
neuview ...
[ /hide OR /h ] ...
[ /disable OR /d ]
[ /lock OR /l ]
[ /source OR /src OR /s ]
[ /conntest OR /con OR /c ]
[ /notes OR /n ]
[ /options OR /opt OR /o ]
[ /network OR /net OR /n ]
[ /firewall OR /fire OR /f ]
[ /error OR /err OR /e ]
[ < /url OR /u OR /address OR /a > < URL Address > ]
Substitute <p> with braces for each Percent Symbol <%> in URL Address.
NOTE: Must be SPACE SEPARATED Command Line WORDS.

Example
-----
neuview /disable /url www.google.com
```

The only parameter that does not correspond with a control on the User Interface is:

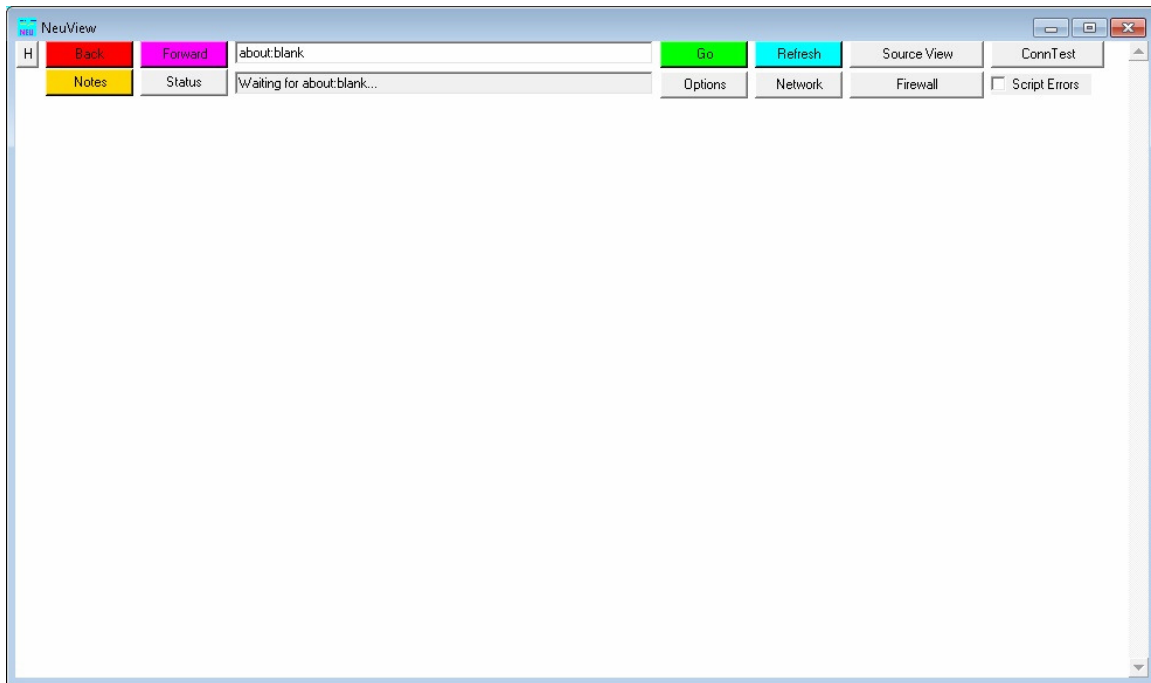
/disable

This special parameter removes ALL controls from the User Interface Window making the user only able to navigate by clicking links in the web page. When using this parameter, you should generally also use the /url OR /address parameter in conjunction with the /disable so as to get you to an initial web page when NeuView User Interface opens, because otherwise you will have no way to navigate anywhere should NeuView start as a Blank Web Page.

To see what the other parameters do, simply read the User Interface Usage section below.

Interface Usage

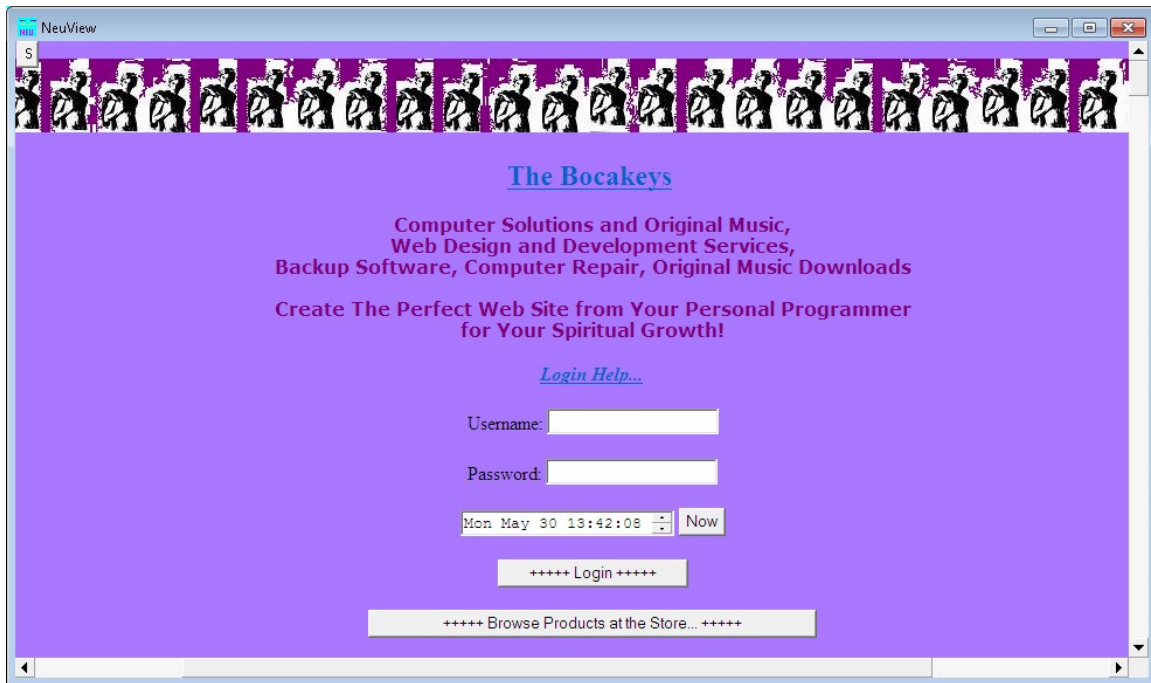
Initial Startup with no parameters:



Show/Hide:

When top-left most button is an “H” (for Hide) and clicked, all controls are hidden except for the “H” button which then turns into an “S” button (for Show) which can then be clicked to restore the controls to be visible again.

This button is obviously abbreviated so as to take up less area to allow maximum view of web pages. To even remove this control, you should set up a shortcut (See Web Links folder for examples – right-click on the shortcut examples and select Properties to see how they are setup - or Command Line batch file (.cmd file) containing the parameter: /disable (See Command Line Usage above) .



Back, Forward, Go, and Refresh:

These are standard browser controls and work exactly the same:

Back – Go Back to Previous Page

Forward – Go Forward to Page that was there before going Back

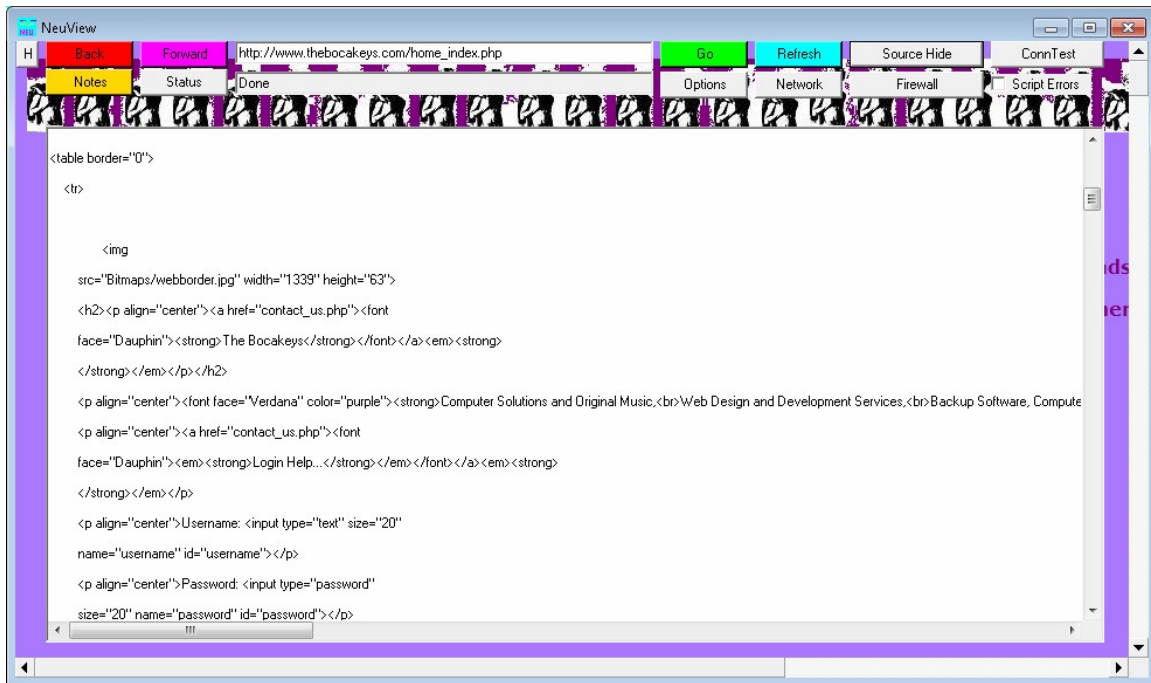
Go – Load current page in URL Address Edit Window Control.

Refresh – Reload current page to Refresh content.

There are no command line parameters for these standard browser controls.

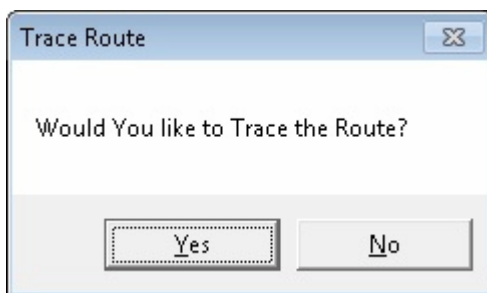
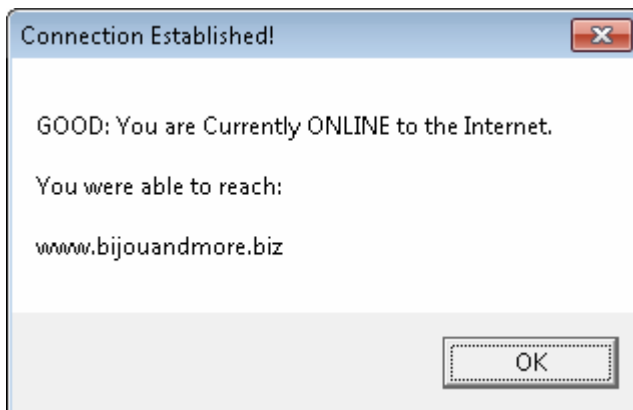
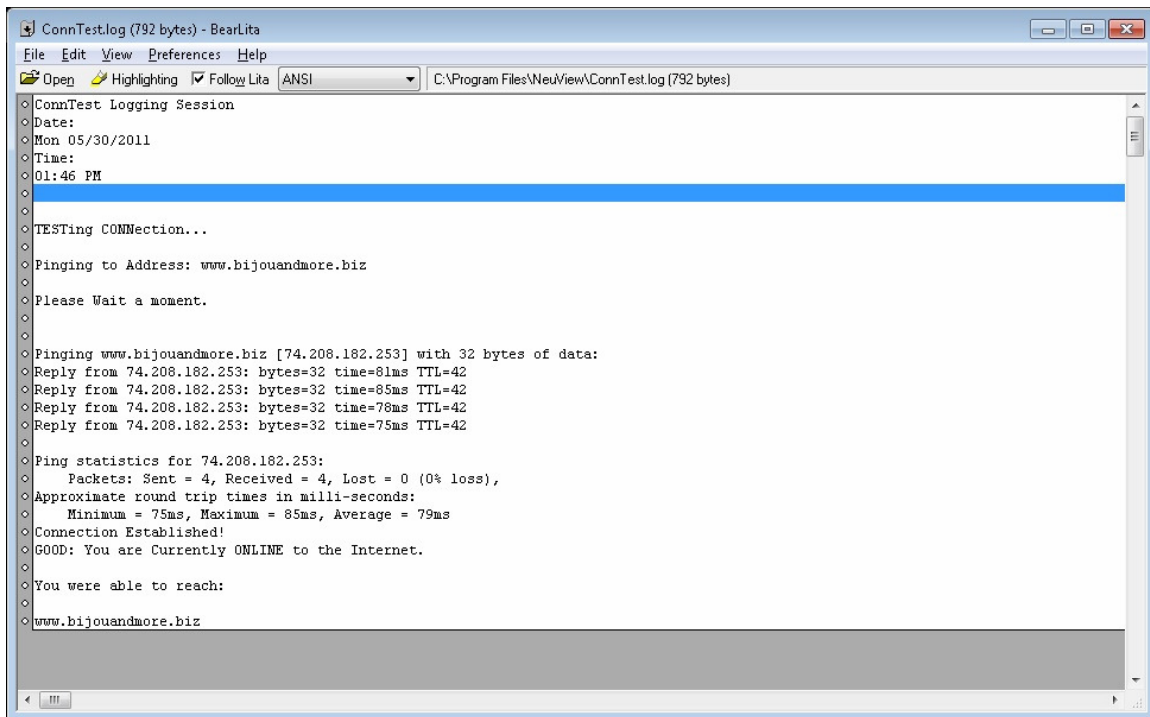
Source View/Source Hide:

Displays HTML source code for current page. Should content in Source Window appear out-of-date, simply do another click of Source Hide then Source View and the code will refresh to match the current page.



ConnTest:

This button will test your internet connection based on the URL address currently displayed. A separate DOS program is spawned. The below snapshots show the sequence of events. Note that a special logging program is also used called BearLita which is a friendly name for the original program. In addition more detailed connection information can be provided by Clicking Yes to the Trace Route popup question.



```
C:\Windows\System32\cmd.exe

Developed by Bocakeys, Inc.
TESTing CONNecTion...
Pinging to Address: www.bijouandmore.biz
Please Wait a moment.

Connection Established!
GOOD: You are Currently ONLINE to the Internet.
You were able to reach:
www.bijouandmore.biz

TESTing CONNecTion...
Routing to Address: www.bijouandmore.biz
Please Wait a moment.
```

```
ConnTest.log (1.9 KB) - BearLita
File Edit View Preferences Help
Open Highlighting Follow Lita ANSI C:\Program Files\NeuView\ConnTest.log (1.9 KB)

o You were able to reach:
o
o www.bijouandmore.biz
o
o
o TESTing CONNecTion...
o
o Routing to Address: www.bijouandmore.biz
o
o Please Wait a moment.
o
o
o Tracing route to www.bijouandmore.biz [74.208.182.253]
o over a maximum of 30 hops:
o
o  1    1 ms    1 ms    1 ms    10.0.0.1
o  2    4 ms    2 ms    2 ms    launchmodem [192.168.1.254]
o  3   11 ms   11 ms   11 ms    adsl-74-233-41-1.mia.bellsouth.net [74.233.41.1]
o  4   30 ms   12 ms   11 ms    70.159.201.68
o  5   15 ms   13 ms   12 ms    12.81.20.8
o  6   13 ms   12 ms   12 ms    12.81.104.6
o  7   13 ms    *    12 ms    12.81.8.75
o  8   13 ms    *    15 ms    74.175.192.174
o  9   17 ms   17 ms   15 ms    cr82.fldfl.ip.att.net [12.123.153.114]
o 10    *    14 ms   17 ms    fldfl101jt.ip.att.net [12.122.81.29]
o 11  124 ms   55 ms    *    208.178.58.145
o 12   82 ms   83 ms   84 ms    64.209.105.234
o 13   75 ms   74 ms    *    te-1-4.bb-c.slr.lxa.us.oneandone.net [74.208.6.106]
o 14   75 ms   77 ms   77 ms    ae-1.gw-dista-a.slr.lxa.oneandone.net [74.208.1.105]
o 15   76 ms   76 ms   76 ms    vl-987.gw-psl.slr.lxa.oneandone.net [74.208.1.133]
o 16   76 ms   82 ms   84 ms    perfora.net [74.208.182.253]
o
o Trace complete.
```



```
ConnTestLog - Notepad
File Edit Format View Help
ConnTest Logging Session
Date:
Mon 05/30/2011
Time:
01:55 PM

TESTING CONNECTION...

Pinging to Address: www.bijouandmore.biz
Please wait a moment.

Pinging www.bijouandmore.biz [74.208.182.253] with 32 bytes of data:
Reply from 74.208.182.253: bytes=32 time=82ms TTL=42
Reply from 74.208.182.253: bytes=32 time=82ms TTL=42
Reply from 74.208.182.253: bytes=32 time=75ms TTL=42
Reply from 74.208.182.253: bytes=32 time=75ms TTL=42

Ping statistics for 74.208.182.253:
    Packets: Sent = 4, Received = 4, Lost = 0 (0% loss),
    Approximate round trip times in milli-seconds:
        Minimum = 75ms, Maximum = 82ms, Average = 78ms
Connection Established!
GOOD: You are Currently ONLINE to the Internet.

You were able to reach:
www.bijouandmore.biz

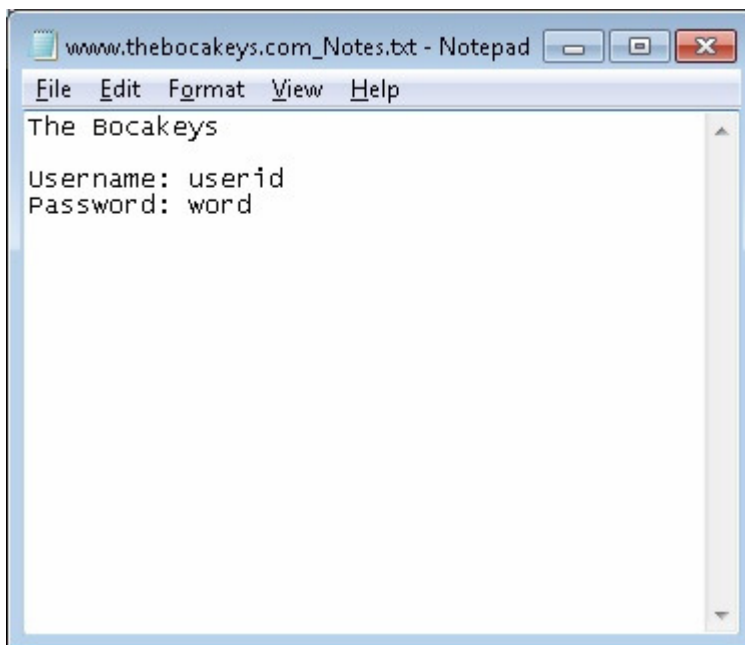
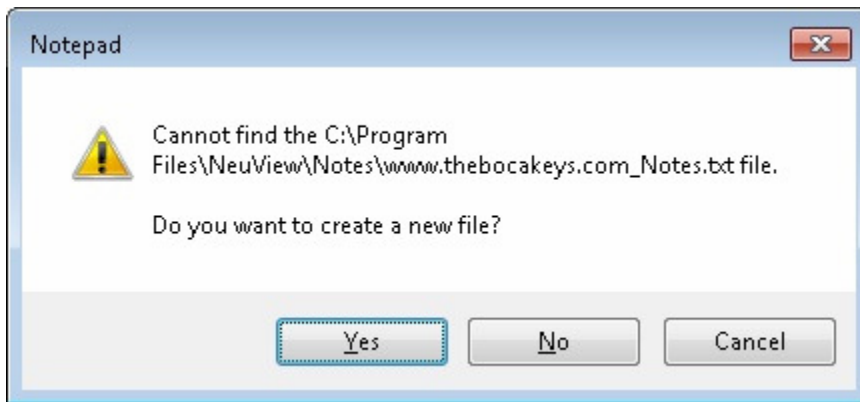
TESTING CONNECTION...

Routing to Address: www.bijouandmore.biz
Please wait a moment.

Tracing route to www.bijouandmore.biz [74.208.182.253]
over a maximum of 30 hops:
  0  1 ms  1 ms  1 ms  10.0.0.1
  1  4 ms  2 ms  2 ms  launchmodem [192.168.1.254]
  2  11 ms  11 ms  11 ms  ads1-74-233-41-1.mia.bellsouth.net [74.233.41.1]
  3  30 ms  12 ms  11 ms  70.159.201.68
  4  15 ms  13 ms  12 ms  12.81.20.8
  5  13 ms  12 ms  12 ms  12.81.104.6
  6  13 ms  *  12 ms  12.81.8.75
  7  13 ms  *  15 ms  74.175.192.174
  8  17 ms  17 ms  15 ms  cr82.fldfl.ip.att.net [12.123.153.114]
  9  *  14 ms  17 ms  fd1f101jt.ip.att.net [12.122.81.29]
 10  124 ms  55 ms  208.178.58.145
 11  82 ms  83 ms  64.209.105.234
 12  75 ms  74 ms  *  te-1-4.bb-c.s1r.lxa.us.oneandone.net [74.208.6.106]
```

Notes:

NeuView does not provide saving of username and password information. This is simpler as so database is generated and possibly makes for a more secure browser. The Notes button feature provides a simple way to save reminders about the web page you are going to, such as username and password information or comments about what things you purchase at that web site, etc. It is a free form notepad .TXT file, so you can type any information you like in it, just be sure to select File → Save when done making changes or else the file will not be updated. The very first time the note for a given web address is opened, you will be prompted to create a new file. Just click Yes here. If this button generates an error, most likely your C:\Program Files\NeuView\Notes folder was not created on installation. You can manually create this folder by using the New→Folder command in Windows Explorer when located in the C:\Program Files\NeuView folder and rename the New Folder to “Notes”. The format of the generated Notes file is the URL address without any subfolders (trailing backslash information) or parameters (information after a question mark (?) in the address) with the name “_Notes.txt” appended to it. A general Note can be saved when NeuView is pointing to a Blank Page i.e. about:blank. The name of the general notes file is “_Notes.txt” which would show at the top of all the notes files when displayed in Windows Explorer sorting by filename.



Status:

This button control Refreshes the Status Bar which is a Read-Only field. Do not make the mistake of entering a URL address in this field which you cannot do anyway. At times the final status of a page does not display so clicking this button will force an update to the Status edit field. Any navigational messages would be displayed here. Oh, this is another button that does not have a corresponding Command Line action.

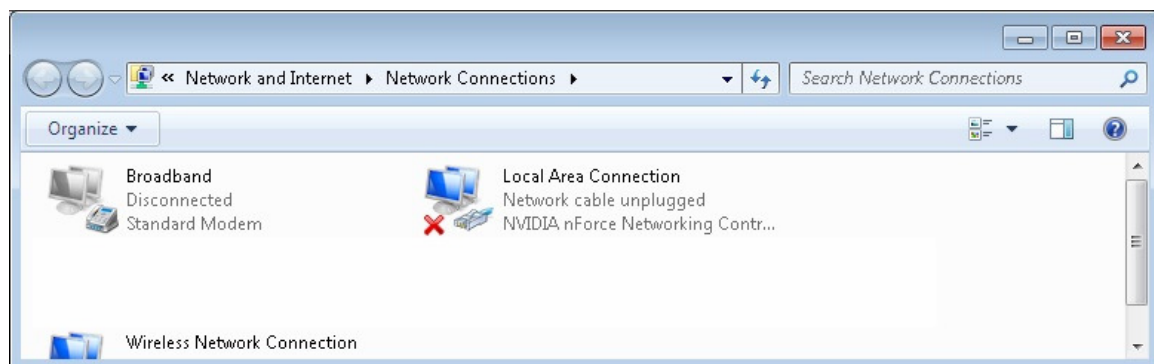
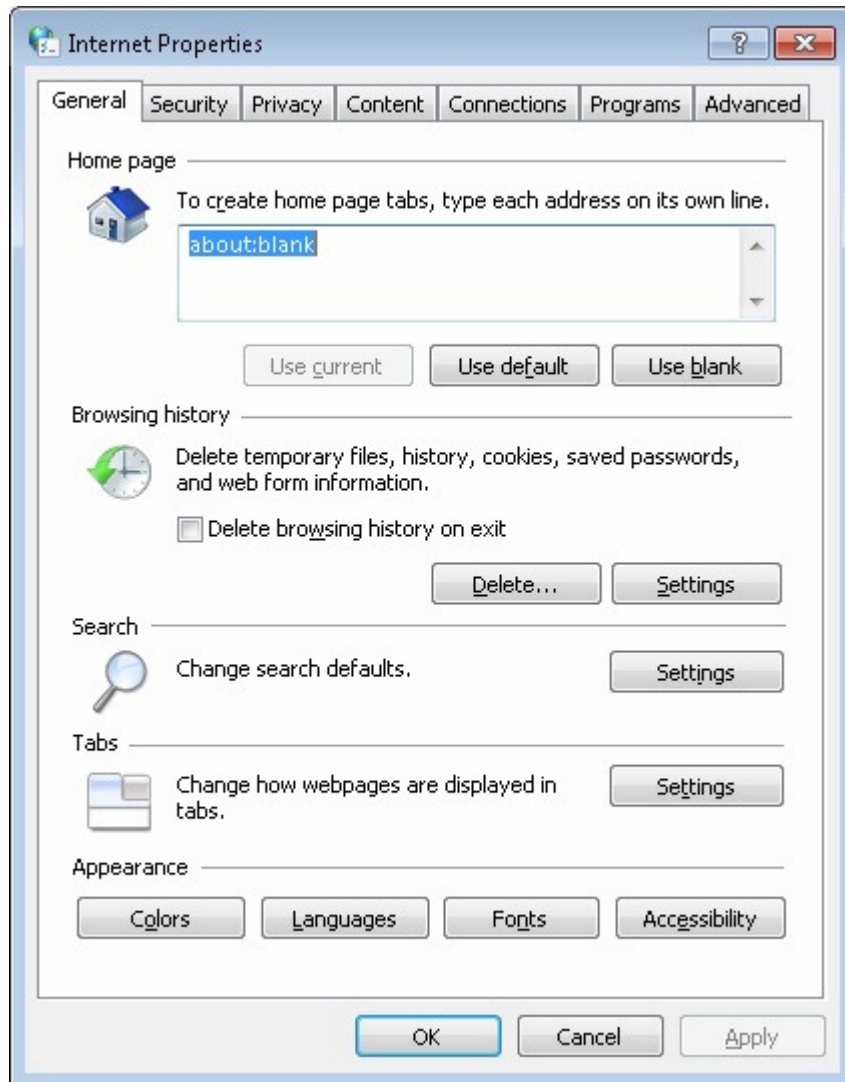
Options, Network, and Firewall:

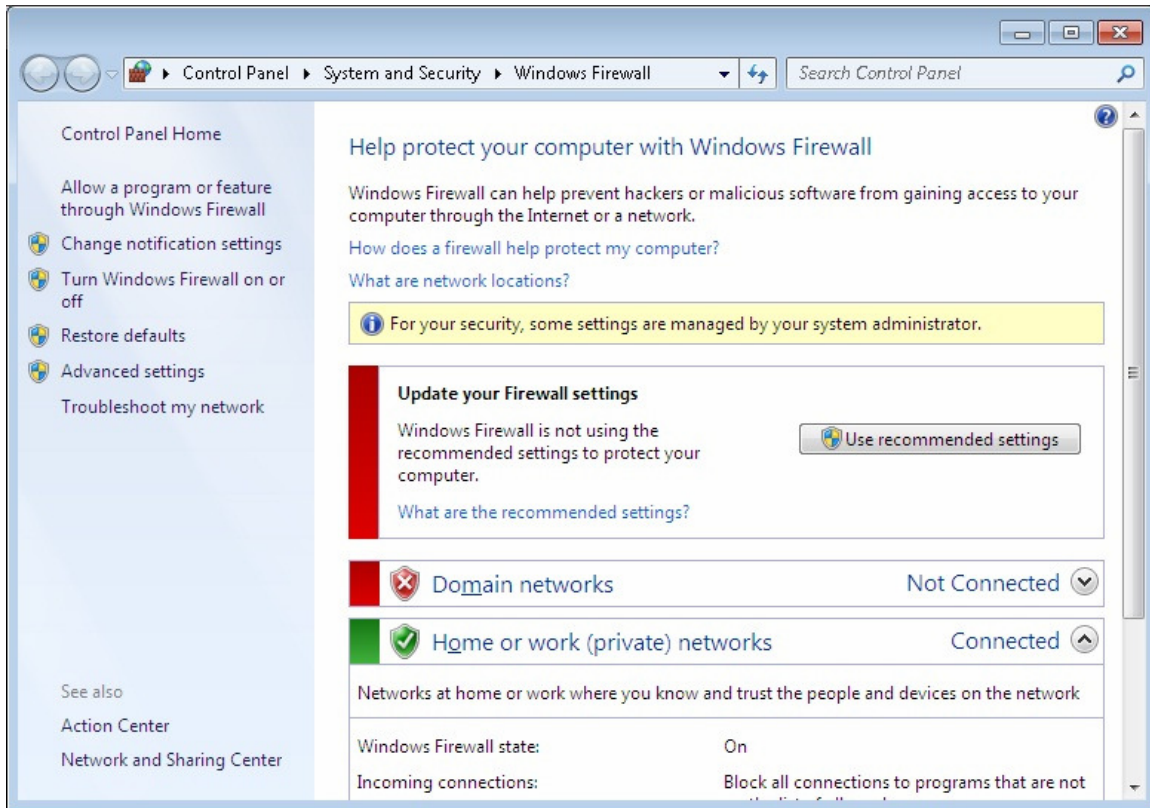
These simply are convenience buttons that open the corresponding Control Panel Windows:

Options: - Internet Options Panel

Network – Network Connections Panel
Firewall – Firewall Configuration Panel

Familiar Snapshots below:

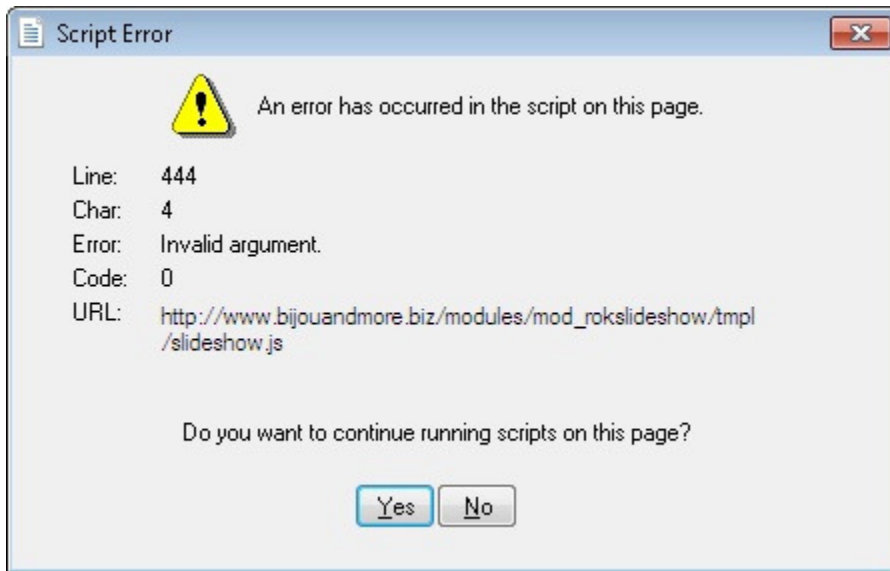




Script Errors:

This is the right-most checkbox on the User Interface. By default it is unchecked so as to prevent unwanted web page script error popups of which there could be several to answer (when checkbox is checked) which can be annoying.

Checking the box and reloading the page with either Go or Refresh will show if the web page has any errors which is Excellent for debugging web pages should you be a web developer, web hobbyist, or just plain curious. The checkbox can be initialized with a command line parameter. See command line help for command line conventions. Example of a typical Script Error is shown below:



Summary

Should you still have questions, you make contact Bocakeys, Inc. Contact information is on our web site at www.thebocakeys.com/contact_us.php

Should you be reading this manual and have not yet purchased a copy of our software, please consider this investment for several reasons: ease of use, high control, soothing pure display, peace of mind, less eye strain, less stress, improved health

Should you have found this software as a shareware item, please consider purchasing the product for several reasons: To Have a Valid Legal License, Access to Free Upgrades, Full Free Support, and also because God may nudge Your Heart to do it because it is The Right Thing To Do.

Respectfully with Love,

Company Owner and Program Designer for Bocakeys, Inc.